

6-PATTERN MOBILE ROTARY GEAR DRIVE SPRINKLER

6 spray patterns to meet all your watering needs - flat, fan, large, jet, full and mini

Range tab - adjust range and prevent water waste

Flow through design allows for additional units to be connected in series . (Max. suggested sprinklers in tandem: 3)

Spray coverage - adjust the range tabs to change the spray from 5° to 360°

Aluminum wide H shape platform design for more stability

Hose connection - added filter to prevent water sediment

Quick Connect Adapter fits all standard garden hoses



For setup, you can choose Method A or B

Method A

Simply attach the sprinkler head to the top of the base and connect to your hose.



Method B

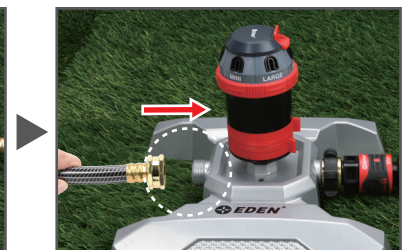
Connect the adapter to the base, attach the hose with the quick lockable connector, then simply snap in the water hose to assembled sprinkler.

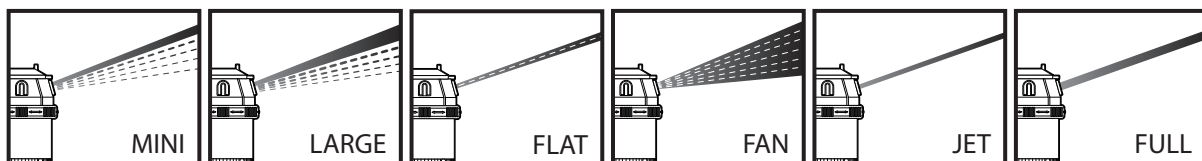
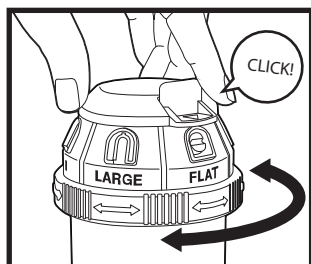


LOCK
↔
+
WATER
STOP



To extend, simply remove the back stop end-cap and attach another hose and connect another sprinkler.





Spray Pattern Adjustments

Depending on your watering needs, you can manually select from the various pattern settings :

Flat - The flat pattern will provide a flat wave of water.

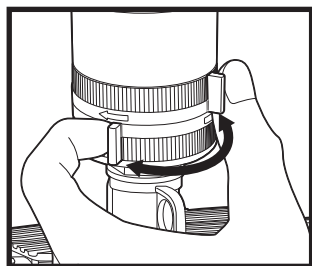
Fan - The fan pattern disperses water in a wide fan shape.

Large - This provides a larger watering spray area.

Full - This pattern provides strong distance watering.

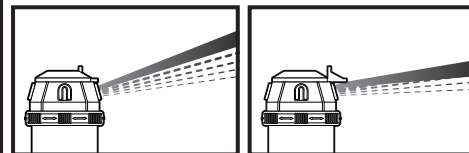
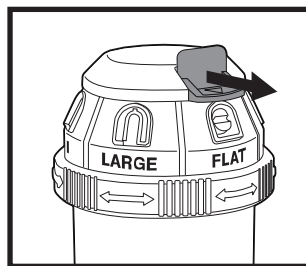
Jet-Concentrated far distance watering.

Mini-Provides gentle spray for delicate plants.



Spray Coverage and Range Adjustment

Adjust the range tabs to change the spray coverage to fit your needs (from 5° up to 360°).



Push out the tab for close range spray

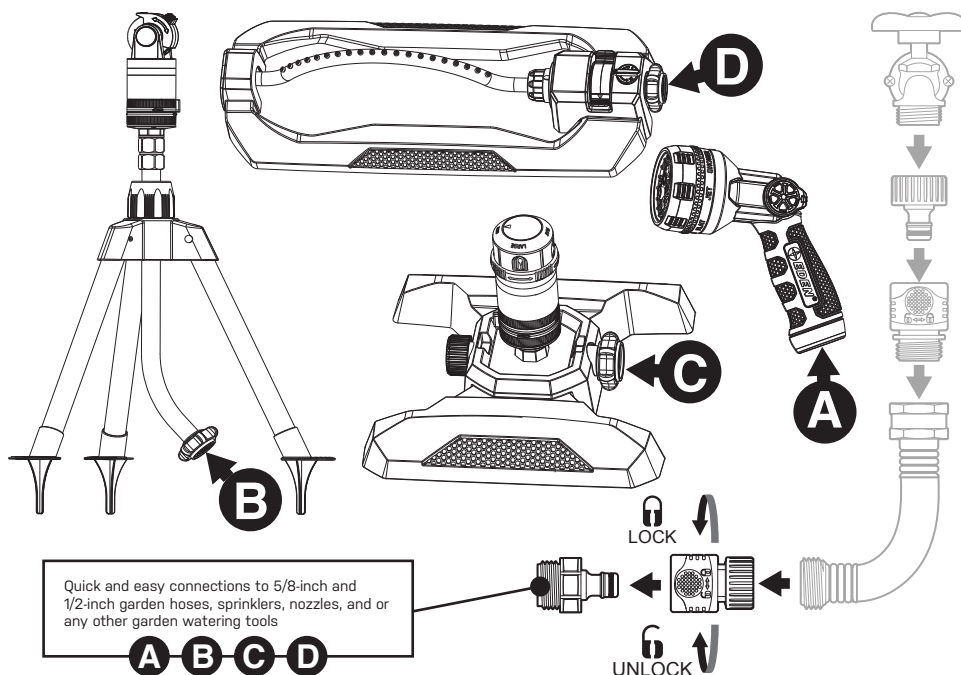
Adjust the tab to control spray distance.

⚠ CAUTION ⚠

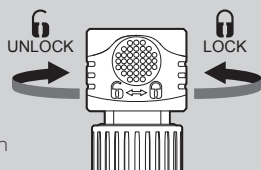
- For outdoor use with cold water only
- Do not spray near electrical connections
- When not in use, rinse the tool with water to remove most of the dirt, dry your tool, and store indoors

This product can expose you to chemicals including styrene, which is known to the State of California to cause cancer. For more information go to www.P65Warnings.ca.gov

The Quick Connect Adapter (2 pcs) and Hose Connector with Water Stop (1 pc) simplify your watering experience. Simply attach the connector at the end of your hose. Then, connect the adapters to your watering tools. Interchange various tools in a snap without turning off the water as the adapter will stop the water flow. No more kinking or hose twisting as the adapter allows the hose to swivel 360 degrees.



Secure twist-and-lock mechanism prevents accidental disconnection



Quick and easy connections to 5/8-inch and 1/2-inch garden hoses, sprinklers, nozzles, and any other garden watering tools

