

# MULTI-PATTERN SPRINKLER PLUS MISTING SYSTEM

5 spray patterns -  
Flat, Fan, large, multi and Mist!

Adjustable diameter tabs  
prevent water waste

Flow through design allows  
for additional units to be  
connected in series

Wide H shape  
platform design for  
added stability

Filter prevents  
sediments and dirt from  
getting into sprinkler

Quick Connect Adapter fits  
most brands of garden hoses



*For setup, you can choose Method A or B*

## Method A

Simply attach the gear driver to the top of the base and connect to your hose



## Method B

Connect the adaptor to the base, attach the hose with the quick lockable connector, then simply snap on the water hose to begin using.



To extend, simply remove the end-cap and attach another hose and connect another sprinkler.



## Spray Coverage and Distance Adjustment

Adjust the range tabs and angle cap to change the spray coverage (from 5° up to 360°) and spraying angle to water just where you need without wasting water.



## Spray Pattern Adjustments

Depending on your watering needs, you can manually select from the various pattern settings :

**FLAT** - The flat pattern will provide a flat wave of water.

**FAN** - The fan pattern disperses water in a wide fan shape.

**MIST** - This pattern is useful to cool down a small area.

**LARGE** - This pattern covers the maximum area.

**MULTI** - This is a combination of the Flat, Fan and Large patterns.



FLAT



FAN



MIST



LARGE



MULTI

## Level Adjustment Indicator

Higher level will create a higher arc resulting in greater water coverage.

Lower levels will reduce coverage.

Convenient indicators are included to help setup when you need to water again.



### HIGHER LEVEL (+) 0 ~ 3 :

The appearance of gradual reduction in water while providing a more dispersed pattern and further distance.



### LEVEL WATER:

The flow is depend on water source. It's the middle point between dispersed and concentrated patterns.



### LOWER LEVEL (-) 0 ~ 3 :

Increase water flow while providing a more concentrated direct flow of water.

### ⚠ CAUTION ⚠

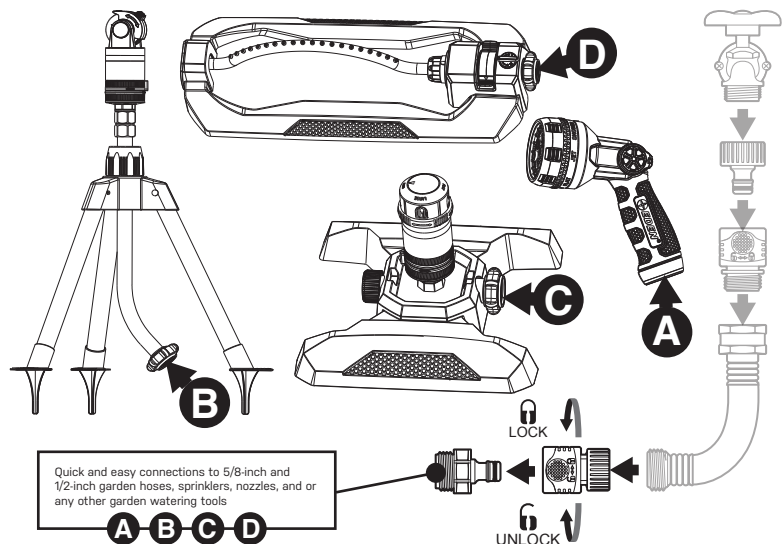
- For outdoor use with cold water only
- Do not spray near electrical connections
- When not in use, rinse the tool with water to remove most of the dirt, dry your tool, and store indoors

This product can expose you to chemicals including styrene, which is known to the State of California to cause cancer.

For more information go to [www.P65Warnings.ca.gov](http://www.P65Warnings.ca.gov)

40 PSI	Large	Multi	Flat	Fan
Radius of Spray	39 ft (12 m)	37 ft (11.5 m)	29 ft (9 m)	27 ft (8.5 m)
Coverage Area up to	4860 sq ft (452 m <sup>2</sup> )	4470 sq ft (415 m <sup>2</sup> )	2730 sq ft (250 m <sup>2</sup> )	2440 sq ft (226 m <sup>2</sup> )

The Quick Connect Adapter (2 pcs) and Hose Connector with Water Stop (1 pc) simplify your watering experience. Simply attach the connector at the end of your hose. Then, connect the adapters to your watering tools. Interchange various tools in a snap without turning off the water as the adapter will stop the water flow. No more kinking or hose twisting as the adapter allows the hose to swivel 360 degrees.



Secure twist-and-lock mechanism prevents accidental disconnection

