

# 4-WAY ADJUSTABLE MINI OSCILLATING SPRINKLER with HEAVYWEIGHT BASE



Quick Connect Adapter fits all standard garden hoses



For setup, you can choose Method A or B

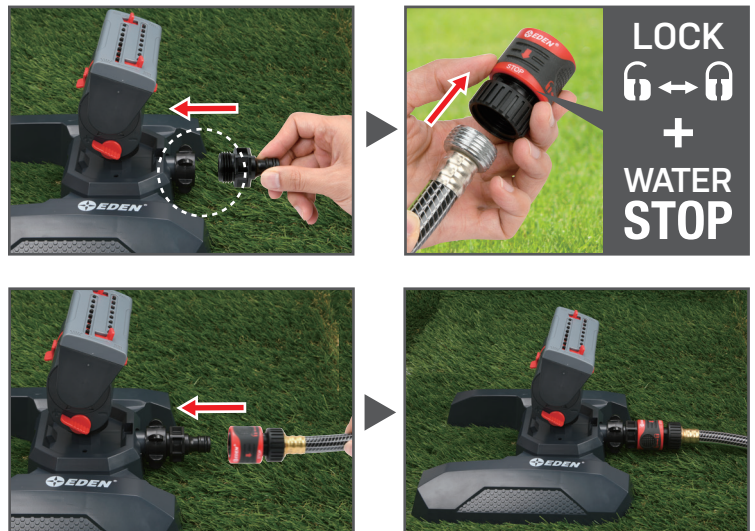
## Method A

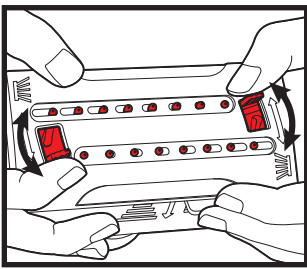
Simply attach the sprinkler head to the top of the base and connect to your hose



## Method B

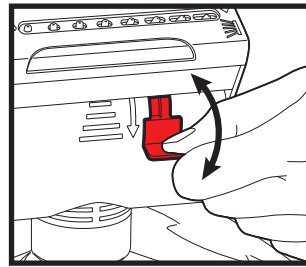
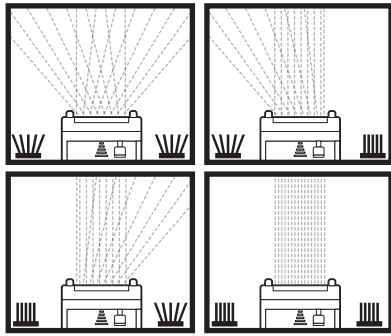
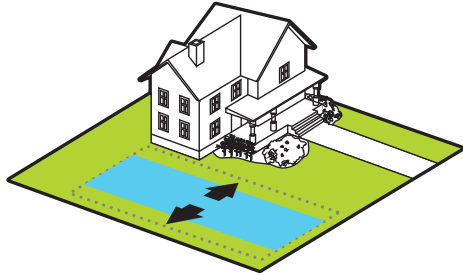
Connect the adapter to the base, attach the hose with the quick lockable connector, then simply snap in the water hose to assembled sprinkler.





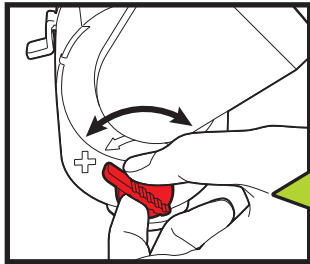
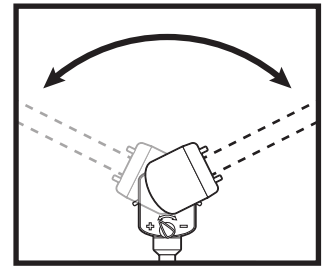
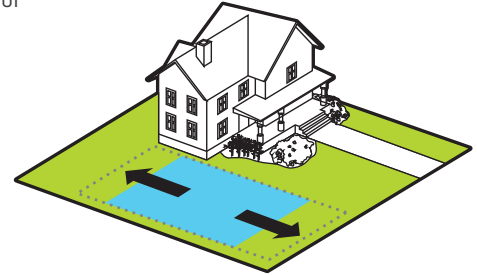
### Range Control (Width)

Sliding tabs allow for mixed coverage.  
(max. up to 43ft (13m))



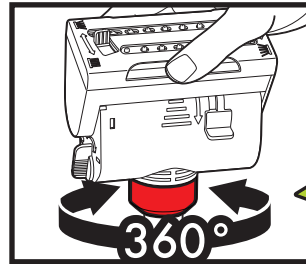
### Range Control (Length)

Push down tabs to allow for mixed length coverage.  
(max. up to 52.5ft (16m))

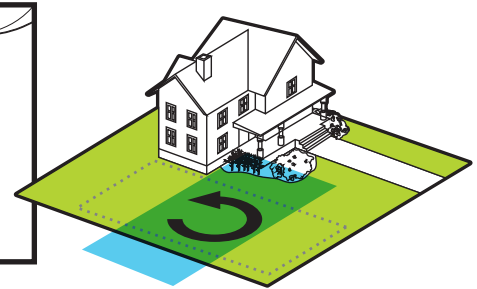


### Water Flow Control

Allows you to control water pressure



### 360° Rotation Adjustment



### ⚠ CAUTION ⚠

- For outdoor use with cold water only
- Do not spray near electrical connections
- When not in use, rinse the tool with water to remove most of the dirt, dry your tool, and store indoors

This product can expose you to chemicals including styrene, which is known to the State of California to cause cancer.  
For more information go to [www.P65Warnings.ca.gov](http://www.P65Warnings.ca.gov)

The Quick Connect Adapter (2 pcs) and Hose Connector with Water Stop (1 pc) simplify your watering experience. Simply attach the connector at the end of your hose. Then, connect the adapters to your watering tools. Interchange various tools in a snap without turning off the water as the adapter will stop the water flow. No more kinking or hose twisting as the adapter allows the hose to swivel 360 degrees.

