

MULTI-PATTERN SPRINKLER PLUS MISTING SYSTEM

5 spray patterns -
Flat, Fan, Large, Multi and Mist!

Flow through design allows
for additional units to be
connected in series

Spray Angle - adjust the tabs to change
the spray angle from 5° to 360°

Wide "H" shape
platform design
for more stability

Hose end connector with
added filter to prevent
sediment and dirt from
reaching sprinkler

Quick Connect Starter Set
fits standard garden hoses
and watering tools



Assembly

Simply attach the sprinkler head to the top of the base.
Hold the bottom of the sprinkler head and base of the
sprinkler to tighten by hand (do not overtighten).



Connect the Hose



LOCK
↔
+
WATER
STOP



Use the Quick Connect System to easily connect and disconnect the sprinkler from the hose. Connect the Product Adapter to the base of the sprinkler. Attach the lockable Quick Connect to the end of the hose, then simply snap in the hose to the sprinkler to begin using.

Use the additional included Product Adapter for your nozzles, wands, or other watering tools to switch between tools, even with the water running.

Note: If you are not using the Quick Connect System,
simply connect the sprinkler directly to the hose.

To extend, simply remove the end-cap and attach
another hose and connect another sprinkler.



Spray Coverage and Distance Adjustment

Adjust the range tabs and angle cap to change the spray coverage (from 5° up to 360°) and spraying angle to water just where you need without wasting water.



Spray Pattern Adjustments

Depending on your watering needs, you can manually select from the various pattern settings:

FLAT - The flat pattern will provide a flat wave of water.

FAN - The fan pattern disperses water in a wide fan shape.

MIST - This pattern is useful to cool down a small area.

LARGE - This pattern covers the maximum area.

MULTI - This is a combination of the Flat, Fan and Large patterns.



FLAT



FAN



MIST



LARGE



MULTI

Level Adjustment Indicator

Move the angle cap to control the distance of your watering area. The higher level will create a higher arc for greater water coverage. The lower level will reduce the watering area. Convenient indicators help you remember your settings for next time.

⚠ CAUTION ⚠

- For outdoor use with cold water only
- Do not spray near electrical connections
- When not in use, rinse the tool with water to remove most of the dirt, dry your tool, and store indoors

⚠ WARNING: This product can expose you to chemicals including styrene, which is known to the State of California to cause cancer. For more information go to www.P65Warnings.ca.gov



HIGHER LEVEL (1-3):

Adjust the spray upwards for maximum distance.



LEVEL (0)

Adjust the spray in between a dispersed and concentrated watering area.

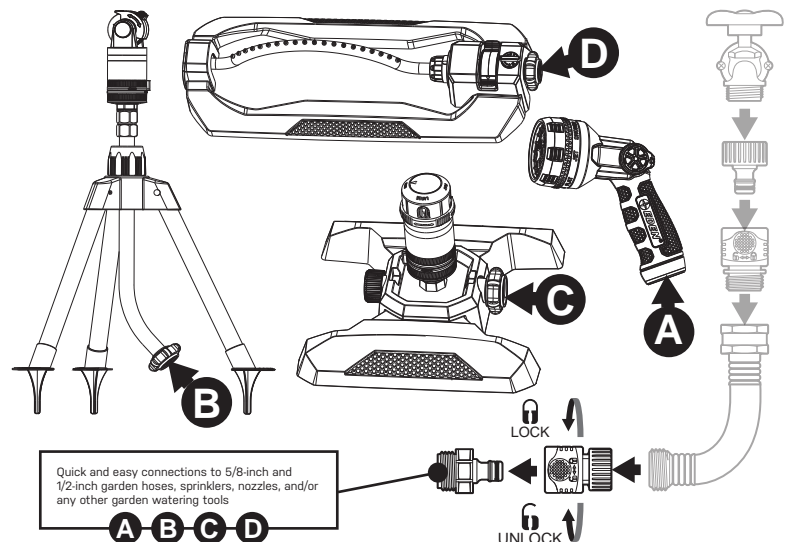


LOWER LEVEL (3-1)

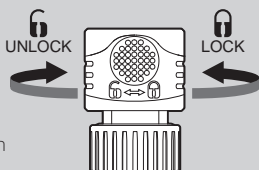
Adjust the spray downwards to reduce the watering area.

40 PSI	Large	Multi	Flat	Fan
Radius of Spray	39 ft (12 m)	37 ft (11.5 m)	29 ft (9 m)	27 ft (8.5 m)
Coverage Area up to	4860 sq ft (452 m ²)	4470 sq ft (415 m ²)	2730 sq ft (250 m ²)	2440 sq ft (226 m ²)

The Quick Connect Adapter (2 pcs) and Hose Connector with Water Stop (1 pc) simplify your watering experience. Simply attach the connector at the end of your hose. Then, connect the adapters to your watering tools. Interchange various tools in a snap without turning off the water as the adapter will stop the water flow. No more kinking or hose twisting as the adapter allows the hose to swivel 360 degrees.



Secure twist-and-lock mechanism prevents accidental disconnection



Quick and easy connections to 5/8-inch and 1/2-inch garden hoses, sprinklers, nozzles, and/or any other garden watering tools

A B C D

LOCK
UNLOCK