

# TURBO GEAR DRIVE 2-PATTERN SPRINKLER

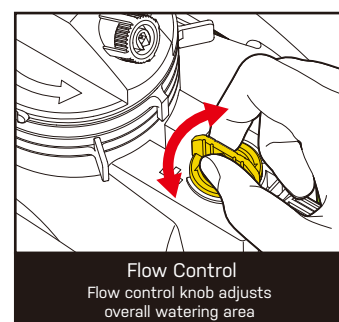
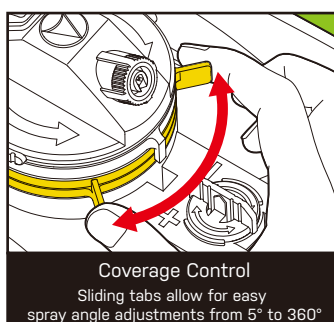
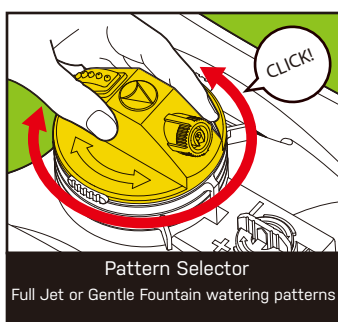


Our Turbo Gear Drive 2-Pattern Sprinkler provides convenient watering of flowers and lawns with two easy-to-select watering patterns. Choose between a full jet and a gentle fountain spray pattern to meet all your watering needs. Adjust the water pressure right at the sprinkler using the flow control knob. The sliding tabs let you control the spray angle and water an area of 5 degrees all the way to 360 degrees for both full and partial circular coverage. The built-in water filter blocks sediment and dirt from clogging the sprinkler.

The sleek, low-profile design combined with the "H" shaped base provides for a stable and durable platform to water your lawns. Easily move the sprinkler anywhere in your yard to water right where you need it.

## Features & Benefits

- Watering dia. up to 62ft (19m); coverage up to 3,020 sq. ft. (284 sq. m.) max
- Whisper quiet operation for early morning watering
- 2 spray patterns (full jet and gentle fountain) are suitable for various watering needs
- Sleek, low-profile design combined with "H" shaped base for stability and durability
- Easy to move and place anywhere in the yard
- 360-degree coverage with easy-to-adjust tabs to modify your watering range wherever you move the sprinkler. Water a full or partial circle from 5° to 360°
- Convenient turning head to select spray pattern
- Flow control knob with built-in water filter blocks sediment and dirt while providing water pressure adjustments



## Basic Set-Up

Simply attach the gear driver sprinkler to your hose.



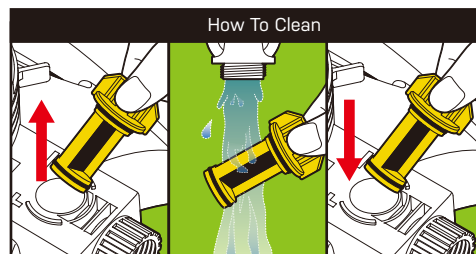
## Set-Up with Quick Connect

Connect the adapter to the base of the sprinkler. Attach the lockable quick connect to the end of the hose and simply snap in the hose to the sprinkler to begin using.



## Cleaning and Maintenance:

If the sprinkler water pressure is low, you may need to clean the built-in filter. Simply pull the flow control knob and remove the filter. Rinse under cold water. Then re-insert the filter into the sprinkler.



## ⚠ CAUTION ⚠

- For outdoor use with cold water only
- Do not spray near electrical connections
- When not in use, rinse the tool with water to remove most of the dirt, dry your tool, and store indoors

This product can expose you to chemicals including styrene, which is known to the State of California to cause cancer. For more information go to [www.P65Warnings.ca.gov](http://www.P65Warnings.ca.gov)

The Quick Connect Adapter (2 pcs) and Hose Connector with Water Stop (1 pc) simplify your watering experience. Simply attach the connector at the end of your hose. Then, connect the adapters to your watering tools. Interchange various tools in a snap without turning off the water as the adapter will stop the water flow. No more kinking or hose twisting as the adapter allows the hose to swivel 360 degrees.

