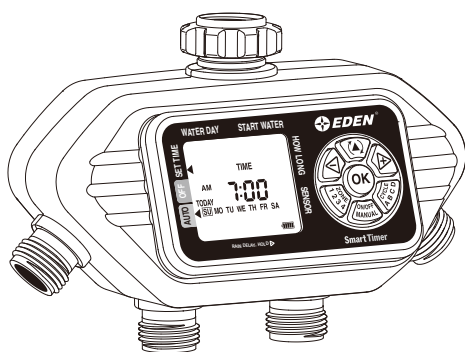




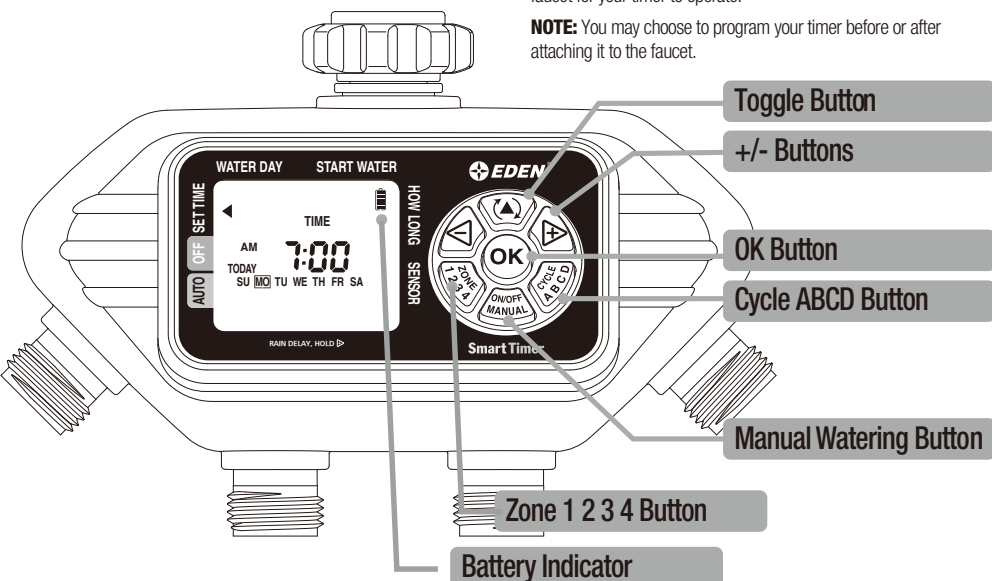
# 4-Zone Digital Programmable Water Timer

Compatible with Eden Wireless Soil Moisture Sensors 25417EDAMZ (sold separately)



93413EDAMZ

Includes 2 extra stainless steel filter washers for a leak-free seal



## Understanding Zones

This is a four-zone timer allowing you to water four different areas from the same faucet.

Each zone can be programmed with up to four different start times.

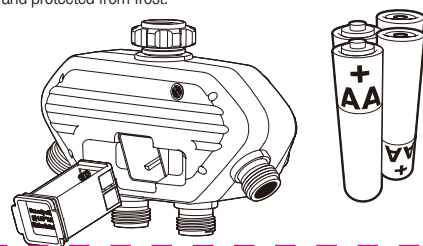
You can use the **PLANNING TABLE** provided at the end of this sheet to help organize your watering schedule for each zone.

## Initial Digital Water Timer Set Up

### 1 Battery Installation & Assembly

Remove the battery holder from the back of the Timer. Insert **4 x AA alkaline batteries** as indicated on the battery holder. Do not use rechargeable batteries. Replace the battery holder, making sure that it is firmly and securely placed in the **Timer**.

**NOTE:** Do not use your timer when the air temperature is below 40°F (4.5° C). When storing your timer, be sure it is in a dry place and protected from frost.



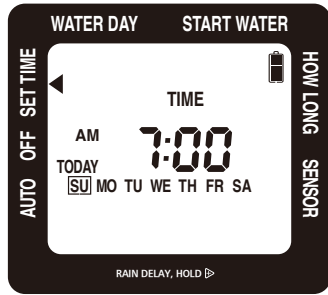
We recommend replacing batteries when the indicator reaches

### Installation of the Timer

Attach the timer to an outside faucet and turn on the water. The water must be left on while the timer is attached to the faucet for your timer to operate.

**NOTE:** You may choose to program your timer before or after attaching it to the faucet.

### 2 SET TIME: "Set Current Time and Day"



Before setting your watering schedule, you must first set the current day of the week and time. When the batteries are first installed, the arrow on the screen will point to **SET TIME**. If it is not in that position, press the button until the arrow is pointing to **SET TIME**.

The Water Timer default setting is a **12-hour** mode (AM/PM). To ensure correct timing, look for either **AM** or **PM** to the left of the time. To switch between **12-hour** (AM/PM) and **24-hour** (military time), hold the button for 10 seconds. **12-hour** mode shows AM or PM while **24-hour** mode does not.

**Note:** Changing time mode will erase all programs.

On your screen, a flashing box will appear around the **SU**. Simply set the timer to the current day by pressing the and buttons on the touchpad until the square is on the correct day. Once the correct day has been indicated, press the button.

To set the time, press the and buttons until the correct time appears on the screen, and then press .

Press the button (at the top of the touch pad) to move to **WATER DAY**

Hold the and buttons to advance settings more quickly.

### 3 WATER DAY: "What days do you want to water?"

With the arrow on the screen pointing to **WATER DAY**, you can select specific days to water or an interval period of days when watering will occur.

To set the watering day, use the and buttons to select the day-of-the-week you wish to water. Press the button when the desired day-of-the-week is highlighted on the screen. You can select as many days as you like. The days selected will have a square around them.

To water at preset intervals, press the button on the touchpad to navigate past the days of the week. Press the and buttons to set the time period

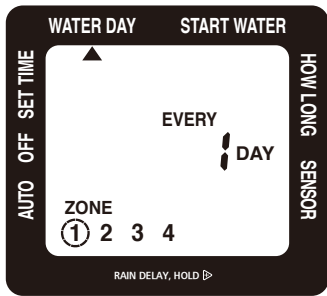
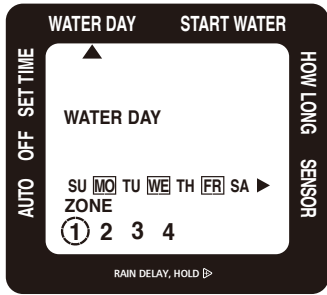
(**EVERY 1 DAY** through **EVERY 7 DAY(s)**).

Press the button to move to **START WATER**.

**Note:** You will see Zone 1 highlighted at the bottom of the screen; program Zone 1 before moving on to Zone 2.

Hold the and buttons to advance settings more quickly.

### 3.1



### 3.2

#### Select Days Example

SUN	MON	TUE	WED	THU	FRI	SAT

#### Regular Intervals Examples

EVERY 1 DAY

SUN	MON	TUE	WED	THU	FRI	SAT

EVERY 2 DAYS

SUN	MON	TUE	WED	THU	FRI	SAT

EVERY 3 DAYS

SUN	MON	TUE	WED	THU	FRI	SAT

4

**START WATER:**

"What time-of-day do you want to water?"



With the arrow pointing to **START WATER** on your screen, **CYCLE A** should be highlighted, use the ◀ and ▶ buttons to select the first watering time. You can select up to four independent start times (**CYCLE A, B, C, D**).

If you want to set another **START WATER** time, press **CYCLE A B C D** to move to **CYCLE B**. Repeat the process above to set the next **START WATER** time. You may select up to four **START WATER** times.

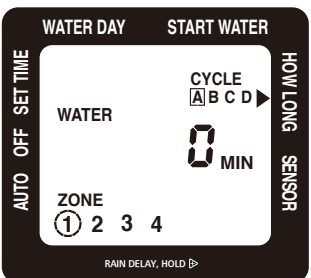
When you have set all desired **START WATER** times, press the ⌂ button to move to **HOW LONG**.

💡 Hold the ◀ ▶ buttons to advance settings more quickly.

5

**HOW LONG:**

"How long do you want to water?"



With the arrow pointing to **HOW LONG**, use the ◀ and ▶ buttons to select the length of each watering cycle. After setting **HOW LONG** you want to water during a selected cycle, press **CYCLE A B C D** to move to the next cycle. Repeat until **HOW LONG** has been set for each cycle.

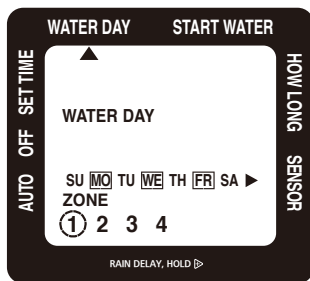
**HOW LONG** can be set for up to 360 minutes (6 hours) for each watering cycle. The cycle length cannot overlap the next **START WATER** time.

**Note:** You can only select Watering Cycles if you have set a start time in **Step 4** above.

6

**SETTING ANOTHER ZONE:**

"Keep your plants watered on separate cycles."



When you have set **WATER DAY, START WATER**, and **HOW LONG** for Zone 1, press the ⌂ button back to **WATER DAY**.

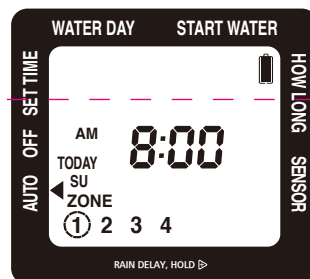
Press **ZONE 1 2 3 4** to select another zone, and repeat steps 3-5 above on up to four individual zones.

When all desired zones are set, press the ⌂ button to move to **AUTO** mode.

7

**AUTO MODE:**

"Your timer is ready to go."

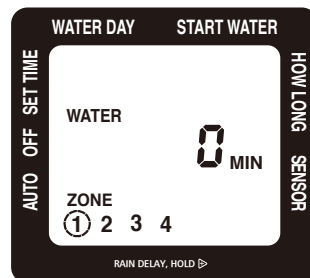


In **AUTO** Mode, your timer will run the watering program you have entered.

The screen display will alternate between showing the current time and the next watering cycle of each zone.

**ADDITIONAL SETTINGS****MANUAL WATERING:**

"Fill a bucket, clean the car or wash the dog."

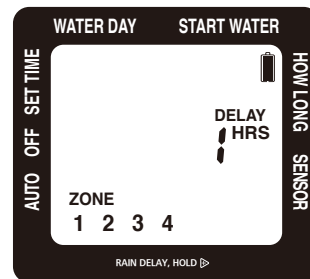


To use a hose or other watering tool, simply press the **ON/OFF MANUAL** button. Then use the **ZONE 1 2 3 4** button to select which zone you want to use.

Using the ▶ button, select the length of time you wish to water. After a few seconds, the valve will open, and then automatically close when the selected time is reached.

**RAIN DELAY:**

"Prevent watering when rain is in the forecast."



If there is rain in the forecast, you can temporarily suspend your watering program on both zones for up to 7 days using the **RAIN DELAY** feature. After the selected delay has ended, your watering program will resume automatically.

To set the **RAIN DELAY**, check to make sure the arrow on the screen is pointing to **AUTO**.

Hold the ▶ button until the word **DELAY** appears. Now press the ▶ button to set the duration of the delay. You can reduce or deactivate the delay period with the ◀ button.

Once the delay time is selected, press the Ⓞ button and wait for the number to stop flashing.

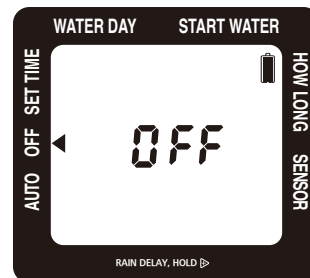
All other functions, including **MANUAL WATERING** and **OFF** are on hold during **RAIN DELAY**.

To cancel **RAIN DELAY**, press the ◀ button until **DELAY** is set to "0".

**Note:** In the **RAIN DELAY** mode, the screen will alternate between the current time and the remaining delay time.

**OFF MODE:**

"Stop watering for an extended period."



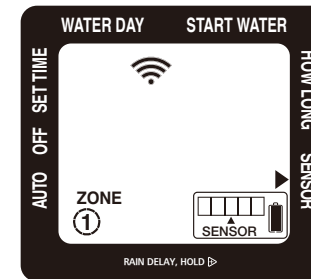
To stop watering indefinitely, press the ⌂ button until the arrow on the screen points to **OFF**. The timer will not water while in this mode. The screen will display the word **OFF**.

To start watering automatically again, press the ⌂ button until the arrow on the screen points to **AUTO**. The program will begin watering at the next previously scheduled **START WATER** Time.

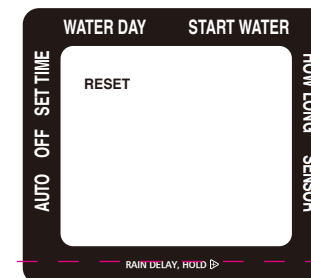
**Note:** Watering will be stopped for all zones when this feature is activated.

**SENSOR:**

"Monitor how wet the soil is to delay watering when needed."



You can pair your timer with the Eden Soil Moisture Sensors (model #25417, sold separately) to monitor how wet the soil is and prevent overwatering. Set your desired moisture level and if the soil is too wet the watering schedule will be delayed.

**TIMER RESET:**

To completely erase all settings in the timer and return to the original factory settings, press the ⌂ button until the arrow is pointing to **SET TIME**. Then press and hold the Ⓞ button for 10 seconds. The screen will display **RESET**.

You will need to press and hold the Ⓞ button a second time to change the clock format.

**Note:** All programming will be lost when the timer is **RESET**. After **RESET** You may need to change the time setting between **12-hour** (AM/PM) and **24-hour** (military time). See **Step 2** for further instructions.

**Timer Spec:**

**Model:** 25413 **Item No.:** 93413EDAMZ

**Pressure Operating:** 10 - 120 PSI

**Temperature Operating:** 32 - 110° F (0 - 45° C) T45

**Receiver Operation Frequency:** 915 MHz (N. Amer.)

## Useful Tips:

### Open Valve During Installation:

Shaking during transportation can cause valve to be open. If this occurs, water may run continuously through the valve during installation.

Turn the water off. Remove the batteries. Wait for the screen to go blank. Reinsert the batteries. Turn the water back on.

**Note:** Removing the batteries will not erase any existing watering schedules.

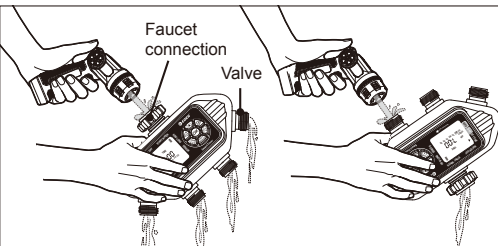
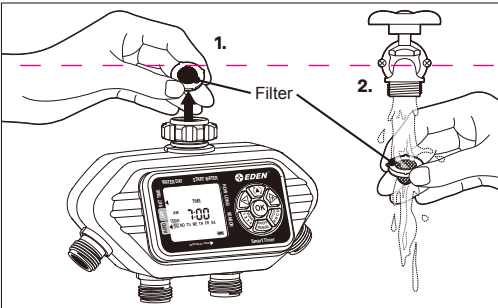
If the problem persists, turn off the water. Use the Manual feature to open and close the valve 3 times.

### Cleaning Your Timer:

You should clean your timer periodically. Debris or sediments commonly found in water can build up in your timer.

Turn off the water. Remove the timer from the faucet and check that the filter washer is clear. If you notice any debris, remove the filter washer and clean it out with water.

Activate the **MANUAL** mode by pressing the **MANUAL** button. Open the valve and spray water through the valve and the faucet connection to flush out any built-up sediments or debris.



### Seasonal Storage:

Freezing temperatures can cause water in the timer to freeze and expand, damaging the timer. At the end of the season or when there is frost in the forecast, turn off the water and remove your timer from the faucet.

Remove the batteries.

Be sure to store the timer indoors, away from freezing temperatures.

### Tips for Battery Life:

- Make sure to use fresh alkaline batteries.
- Do not use rechargeable batteries.
- Remove the batteries at the end of the season before storing.
- Batteries should last about one season. A schedule with more frequent watering times can cause the batteries to drain faster.

### FCC Statement:

This device complies with part 15 of the FCC Rules. Operation is subject to the following two conditions:

(1) This device may not cause harmful interference, and (2) this device must accept any interference received, including interference that may cause undesired operation.

Caution: Any changes or modifications not expressly approved by the grantee of this device could void the user's authority to operate the device.

Note: This equipment has been tested and found to comply with the limits for a Class B digital device, pursuant to part 15 of the FCC Rules. These limits are designed to provide reasonable protection against harmful interference in a residential installation. This equipment generates, uses and can radiate radio frequency energy and, if not installed and used in accordance with the instructions, may cause harmful interference to radio communications. However, there is no guarantee that interference will not occur in a particular installation. If this equipment does cause harmful interference to radio or television reception, which can be determined by turning the equipment off and on, the user is encouraged to try to correct the interference by one or more of the following measures:

- Reorient or relocate the receiving antenna.
- Increase the separation between the equipment and receiver.
- Connect the equipment into an outlet on a circuit different from that to which the receiver is connected.
- Consult the dealer or an experienced radio/TV technician for help.

### CAN ICES-3 (B)/NMB-3(B) Canada Statement :

This device complies with Industry Canada's licence-exempt RSSs. Operation is subject to the following two conditions:

(1) This device may not cause interference; and (2) This device must accept any interference, including interference that may cause undesired operation of the device.

Le présent appareil est conforme aux CNR d'Industrie Canada applicables aux appareils radio exempts de licence. L'exploitation est autorisée aux deux conditions suivantes : (1) l'appareil ne doit pas produire de brouillage, et (2) l'utilisateur de l'appareil doit accepter tout brouillage radioélectrique subi, même si le brouillage est susceptible d'en compromettre le fonctionnement.

### ⚠ CAUTION ⚠

Intended for outdoor use only. Severe electrical shock could result if water is sprayed into outlets or sources of electrical current. Do not use water more than 115°F (46°C). Do not use when the ambient air temperature is less 40°F (4.5°C). When not in use, remove batteries, drain and store indoors away from freezing temperatures.

### Disposal:

Should your unit need replacement after extended use, do not dispose of it with the household waste, but in an environmentally safe way.



Waste produced by electrical machine items should not be handled like normal household garbage. Please recycle where recycle facilities exist. Check with your local authority or retailer for recycling advice.

**⚠ WARNING:** This product can expose you to chemicals including lead, which is known to the State of California to cause cancer and birth defects or other reproductive harm, and styrene, which is known to the State of California to cause cancer. For more information go to [www.P65Warnings.ca.gov](http://www.P65Warnings.ca.gov).

### PLANNING TABLE

ZONE 1	CYCLE A	CYCLE B	CYCLE C	CYCLE D
Start Water (Time)				
How Long (Minutes)				
ZONE 2	CYCLE A	CYCLE B	CYCLE C	CYCLE D
Start Water (Time)				
How Long (Minutes)				
ZONE 3	CYCLE A	CYCLE B	CYCLE C	CYCLE D
Start Water (Time)				
How Long (Minutes)				
ZONE 4	CYCLE A	CYCLE B	CYCLE C	CYCLE D
Start Water (Time)				
How Long (Minutes)				

### Works with



Wireless Soil Moisture Sensor (not included)

Prevent overwatering while conserving water by connecting your timer to the Wireless Soil Moisture Sensor. The easy to set sensor monitors moisture in the soil, and will suspend a watering cycle when it is raining or when the ground is already wet.

Learn more at [www.edengarden.com](http://www.edengarden.com)

