



94051EDAMZ

1/2" GARDEN HOSE 50ft(15m) with CONNECTORS



Eden garden hoses are designed to provide extra strength, prevent kinking, and limit algae growth while resisting pressure build-up that can accumulate overtime. The braided reinforced material allows for a high-pressure environment while reducing hose kinking.

The Eden hose is specially designed to be used with any Eden product and is compatible with most gardening accessories. The garden hose is flexible to use and lightweight to manage. Don't let the small inner diameter deceive you. You will achieve better water pressure with a smaller diameter while conserving water resources.

Primarily designed to use with Eden Flex Design Sprinkler Sets and Daisy Flex Design Sprinkler and can also be used as a standard 1/2" garden hose.

Flex Design
Sprinkler
Sets



Daisy
Flex Design
Sprinkler
Sets



HOSE REPAIR

Extends the length of one hose or repairs a broken hose



MALE END HOSE CONNECTOR

Easily connects to your watering tools and accessories



FEMALE END HOSE CONNECTOR

Connects to any faucet or standard garden hose

50ft / 15m
1/2" Garden Hose

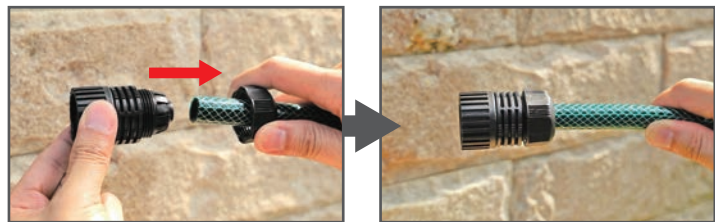


FEATURES & BENEFITS :

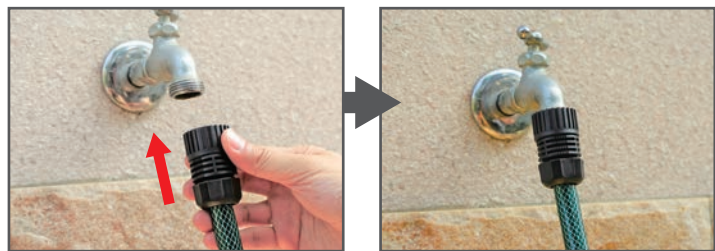
- **Durability** - 3 Ply braided reinforced hose offers strength and flexibility while reducing wear and tear to last year after year.
- **Versatility** - Connects to any Eden product and is compatible with most other watering tools.
- **Lightweight** - Even when filled with water, the hose will still be lighter than comparable rubber hoses.
- **Simple Connections** - Connectors are included to easily connect your hose to the faucet and connect watering accessories. No tools required.
- **Functionality** -
The hose can be used for several functions :
 - 1) Extend the reach of Eden Multi-Adjustable Flex Design Set or Eden Multi-Adjustable Spike Sprinkler with Extension Set. (up to 50ft or 15m)
 - 2) Attach several watering accessories such as Flex Design Set, oscillating sprinklers, etc...
 - 3) Mend and repair damaged hoses.
 - 4) Increase the length of your current hose.

INSTALLATION:

1 Remove the black ring from the Female End Connector and slide it over your hose. Then, push the hose into the Connector until it is fully inserted. Slide the black ring back to the Connector and tighten by hand (**do not overtighten**).



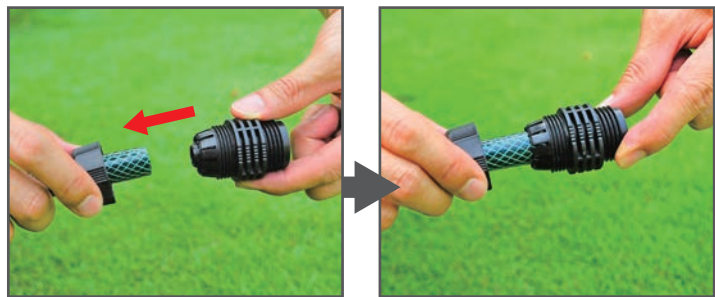
2 Connect the hose to the faucet or other hose connections.



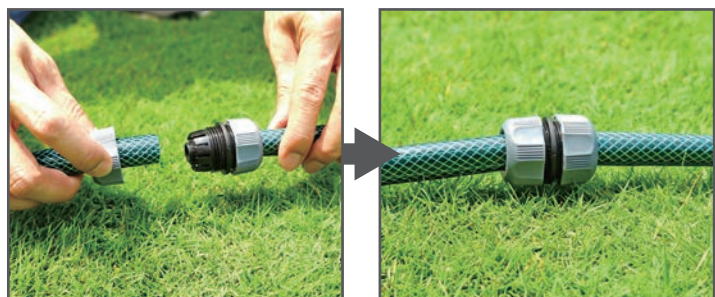
4 The Male End Connector attaches to most watering tools or extends the reach of flow through sprinklers.



3 Follow the same steps to attach the Male End Connector.



3 Hose Repair - Use the Hose Repair to repair a broken hose or permanently make a hose longer.



⚠️WARNING: This product can expose you to chemicals including styrene, which is known to the State of California to cause cancer. For more information go to www.P65Warnings.ca.gov.