

# DIY Garden Hose & Faucet Connector 10 pc Set

INCLUDES : 1× Hose Repair  
3× Female end hose connectors  
3× T-connectors  
3× Stop end caps



## FEMALE END HOSE CONNECTOR

Connects to any faucet or standard garden hose



## HOSE REPAIR

Extends the length of one hose or repairs a broken hose



## T-CONNECTOR

Use the T-Connector to split the water flow into two directions



## STOP END CAP

Apply STOP End Cap at the end of circuit



97063-EDAMZ  
98063EDAMZ



97065EDAMZ



96093EDAMZ

Works with all Eden sprinklers systems such as Flex Design Sprinkler (97063/98063) / Flex-Design Daisy Sprinkler Set (97065), Multi-Adjustable Spike Sprinkler with Extension Set (96093)

The Eden DIY Garden Hose & Faucet Connector Set is the ideal extension kit for all your watering needs. Use it to grow your current watering system and add greater flexibility. It can be attached horizontally or vertically in any direction. The end cap can block watering at the end of a circuit.

The ten-piece set is designed to be used with Eden watering accessories and fits most other brands of watering tools. No need to search for the right size connector. It is an all-inclusive kit.

## Features & Benefits:

- Flexibility** - Connects to any Eden product and is compatible with most other watering tools.
- Simple Connections** - Easily connect your hose to the faucet. No tools required.
- Customization** - Customizable to fit your raised beds, containers, vegetable rows, or shrubs perfectly.
- Adaptability** - Adaptable to all irrigation needs. It can be attached horizontally or vertically in any direction.
- Rugged Construction** - Made of strong ABS material to last season after season.

**Female End Hose Connector** - Connect to any faucet or standard garden hose. Use this connector to replace the broken female fitting to simplify repairs.

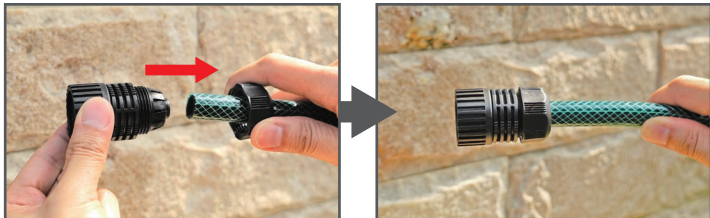
**T-Connector** - Split the watering path and expand the watering area. The T-Connector can be used anywhere along the tubing path.

**Hose Repair** - Use the Hose Repair to repair a broken hose or permanently make a hose longer.

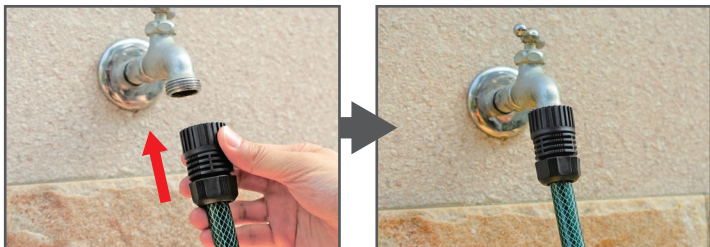
**Stop End Cap** - Place the stop end cap at the end of your watering circuit to block the water flow temporarily or permanently.

## Female end hose connector:

Remove the black ring from the Female End Connector and slide it over your hose. Then, push the hose into the Connector until it is fully inserted. Slide the black ring back to the Connector and tighten by hand (*do not overtighten*).



Connect the hose to the faucet or other hose connections.



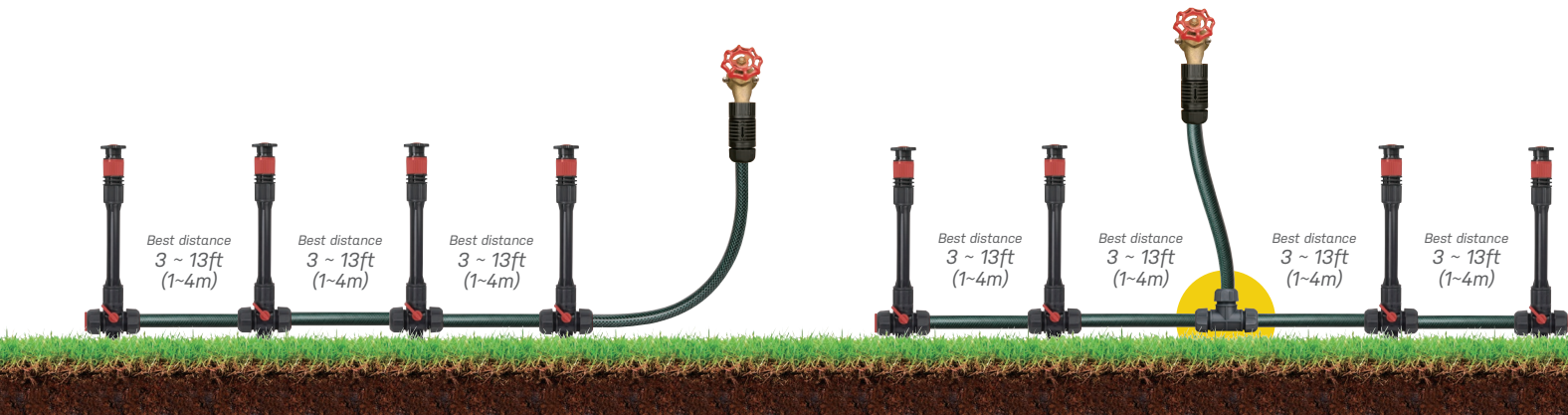
## Hose repair:

Use the Hose Repair to repair a broken hose or permanently make a hose longer.



## T-Connector:

If your faucet is in the middle of your watering area, use the **T-Connector** to split the water flow into two directions.



## Stop end cap:

Apply STOP End Cap at the end of circuit to stop the water flow.



### ⚠ CAUTION ⚠

-For outdoor use with cold water only

**⚠ WARNING:** This product can expose you to chemicals including styrene, which is known to the State of California to cause cancer. For more information go to [www.P65Warnings.ca.gov](http://www.P65Warnings.ca.gov).

Made in Taiwan [www.edengarden.com](http://www.edengarden.com)