

6-PATTERN MOBILE ROTARY GEAR DRIVE SPRINKLER

6 spray patterns to meet all your watering needs - flat, fan, large, jet, full and mini

Flow through design allows for additional units to be connected in series . (Max. suggested sprinklers in tandem: 3)

Range Control Tab - adjust spray distance and prevent water waste

Spray coverage - adjust the range tabs to change the spray from 5° to 360°

Aluminum wide H shape platform design for more stability

Hose connection - added filter to prevent water sediment

Quick Connect Adapter fits all standard garden hoses



Perfect for watering lawns and gardens



Agricultural



Horticultural



Vegetables



Fruits



Lawn

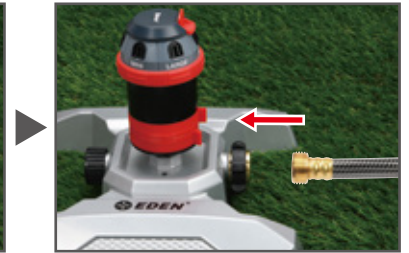


Garden

For setup, you can choose Method A or B

Method A

Simply attach the sprinkler head to the top of the base and connect to your hose.

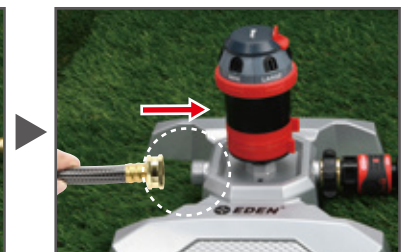


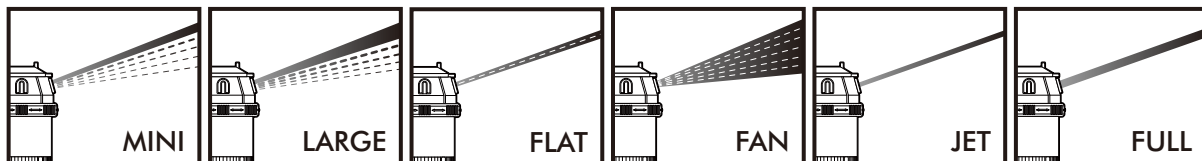
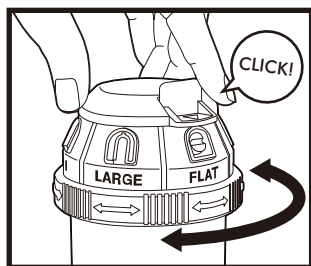
Method B

Connect the adapter to the base, attach the hose with the quick lockable connector, then simply snap in the water hose to assembled sprinkler.



To extend, simply remove the back stop end-cap and attach another hose and connect another sprinkler.





Spray Pattern Adjustments

Depending on your watering needs, you can manually select from the various pattern settings :

Mini - Provides gentle spray for delicate plants.

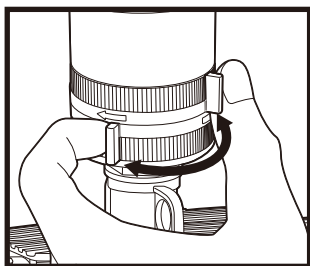
Large - This provides a larger watering spray area.

Flat - The flat pattern will provide a flat wave of water.

Fan - The fan pattern disperses water in a wide fan shape.

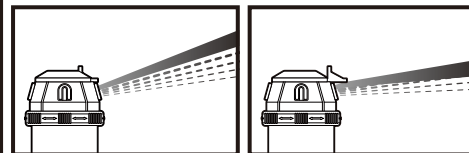
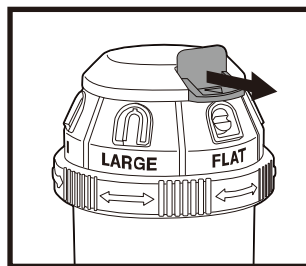
Jet - Concentrated far distance watering.

Full - This pattern provides strong distance watering.



Spray Coverage and Range Adjustment

Adjust the range tabs to change the spray coverage to fit your needs (from 5° up to 360°).



Push out the tab for close range spray

Adjust the tab to control spray distance.

WARNING:

Intended for outdoor agricultural or horticultural use only. This is not a toy. Severe electrical shock could result if water is sprayed into outlets or sources of electrical current. Do not use water more than 115°F (46°C). Do not use when the ambient air temperature is less than 40°F (4.5°C). When not in use, drain and store indoors away from freezing temperatures.

⚠ WARNING: This product can expose you to chemicals including styrene, which is known to the State of California to cause cancer. For more information go to www.P65Warnings.ca.gov

QUESTIONS? CONCERNS?

We're here to help!

Contact our reliable, US-based Customer Service

support@edengarden.com

1+ 866-521-7718

The Quick Connect Adapter (2 pcs) and Hose Connector with Water Stop (1 pc) simplify your watering experience. Simply attach the connector at the end of your hose. Then, connect the adapters to your watering tools. Interchange various tools in a snap without turning off the water as the adapter will stop the water flow. No more kinking or hose twisting as the adapter allows the hose to swivel 360 degrees.

