

TURBO GEAR DRIVE 2-PATTERN SPRINKLER

2 spray patterns to meet all your watering needs – Full Jet and Gentle Fountain



Adjustable spray coverage - sliding tabs change the spray angle from 5° to 360°

Water flow control knob with easy-to-clean removable filter

Hose Connection Nut

Wide "H" shape platform design for added stability

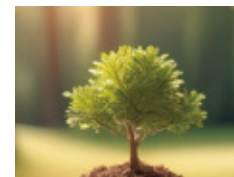
Quick Connect Adapter fits all standard garden hoses



Perfect for watering lawns and gardens



Agricultural



Horticultural



Vegetables



Fruits



Lawn



Garden

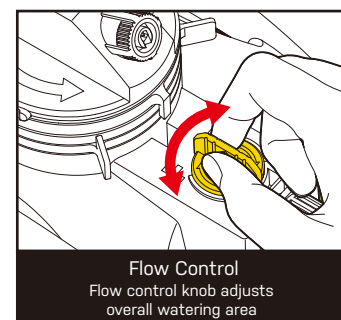
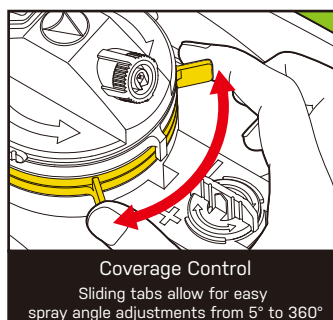
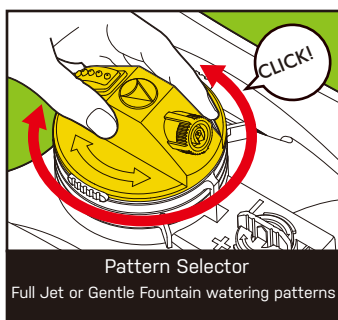


Our Turbo Gear Drive 2-Pattern Sprinkler provides convenient watering of flowers and lawns with two easy-to-select watering patterns. Choose between a full jet and a gentle fountain spray pattern to meet all your watering needs. Adjust the water pressure right at the sprinkler using the flow control knob. The sliding tabs let you control the spray angle and water an area of 5 degrees all the way to 360 degrees for both full and partial circular coverage. The built-in water filter blocks sediment and dirt from clogging the sprinkler.

The sleek, low-profile design combined with the "H" shaped base provides for a stable and durable platform to water your lawns. Easily move the sprinkler anywhere in your yard to water right where you need it.

Features & Benefits

- Watering diameter up to 62ft (19m); coverage up to 3,020 sq. ft. (280.6 sq. m.) max
- Whisper quiet operation for early morning watering
- 2 spray patterns (full jet and gentle fountain) are suitable for various watering needs
- Sleek, low-profile design combined with "H" shaped base for stability and durability
- Easy to move and place anywhere in the yard
- 360-degree coverage with easy-to-adjust tabs to modify your watering range wherever you move the sprinkler. Water a full or partial circle from 5° to 360°
- Convenient turning head to select spray pattern
- Flow control knob with built-in water filter blocks sediment and dirt while providing water pressure adjustments



Basic Set-Up

Simply attach the gear driver sprinkler to your hose.



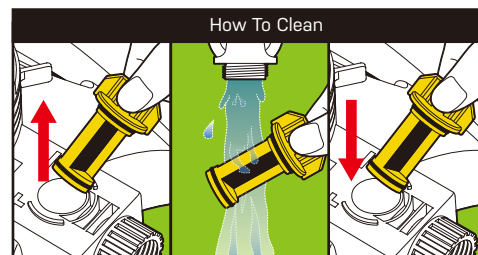
Set-Up with Quick Connect

Connect the adapter to the base of the sprinkler. Attach the lockable quick connect to the end of the hose and simply snap in the hose to the sprinkler to begin using.



Cleaning and Maintenance

If the sprinkler water pressure is low, you may need to clean the built-in filter. Simply pull the flow control knob and remove the filter. Rinse under cold water. Then re-insert the filter into the sprinkler.



WARNING:

Intended for outdoor agricultural or horticultural use only. This is not a toy. Severe electrical shock could result if water is sprayed into outlets or sources of electrical current. Do not use water more than 115°F (46°C). Do not use when the ambient air temperature is less than 40°F (4.5°C). When not in use, drain and store indoors away from freezing temperatures.

WARNING: This product can expose you to chemicals including styrene, which is known to the State of California to cause cancer. For more information go to www.P65Warnings.ca.gov.

EDEN

QUESTIONS? CONCERNS?

We're here to help!

Contact our reliable, US-based Customer Service

support@edengarden.com

1+ 866-521-7718

The Quick Connect Adapter (2 pcs) and Hose Connector with Water Stop (1 pc) simplify your watering experience. Simply attach the connector at the end of your hose. Then, connect the adapters to your watering tools. Interchange various tools in a snap without turning off the water as the adapter will stop the water flow. No more kinking or hose twisting as the adapter allows the hose to swivel 360 degrees.

