

# MULTI-PATTERN SPRINKLER PLUS MISTING SYSTEM WITH STEP SPIKE

5 spray patterns to meet all your watering needs - flat, fan, mist, large, and multi

Spray Angle - adjust the tabs to change the spray angle from 5° to 360°

Flow-through design to connect units in a series

Filter washer blocks sediment and dirt from getting into sprinkler

Spike designed to be easy to hold and move around your yard

Step spike is easily placed into the soil

Durable, zinc construction made to last

Perfect for watering lawns and gardens



Agricultural



Horticultural



Vegetables



Fruits



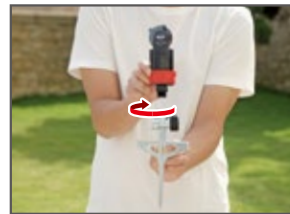
Lawn



Garden

## Assembly

Simply attach the sprinkler head to the top of the spike. Hold the bottom of the sprinkler head and spike to tighten by hand (do not overtighten).



Quick Connect Starter Set fits all standard garden hoses and watering tools



## Connect the Hose

Use the Quick Connect System to easily connect and disconnect the sprinkler from the hose. Connect the Product Adapter to the spike. Attach the lockable Quick Connect to the end of the hose, then simply snap in the hose to the sprinkler to begin using.

Use the additional included Product Adapter for your nozzles, wands, or other watering tools to switch between tools, even with the water running.

**NOTE:** If you are not using the Quick Connect System, simply connect the sprinkler directly to the hose.



To extend, simply remove the back end-cap and attach another hose and connect another sprinkler.



## Spray Coverage and Distance Adjustment

Adjust the range tabs and angle cap to change the spray coverage (from 5° up to 360°) and spraying angle to water just where you need without wasting water. The sprinkler head does NOT rotate in the mist setting.



## Spray Pattern Adjustments

Depending on your watering needs, you can manually select from the various pattern settings:

**FLAT** - The flat pattern will provide a flat wave of water.

**FAN** - The fan pattern disperses water in a wide fan shape.

**MIST** - This pattern is useful for watering delicate plants. (Does not rotate)

**LARGE** - This pattern covers the maximum area.

**MULTI** - This is a combination of the Flat, Fan and Large patterns.



## Level Adjustment Indicator

Move the angle cap to control the distance of your watering area. The higher level will create a higher arc for greater water coverage. The lower level will reduce the watering area. Convenient indicators help you remember your settings for next time.



40 PSI	Large	Multi	Flat	Fan
Radius of Spray	39 ft (12 m)	37 ft (11.3 m)	29 ft (9 m)	27 ft (8.2 m)
Coverage Area up to	4860 sq ft (452 m <sup>2</sup> )	4470 sq ft (415 m <sup>2</sup> )	2730 sq ft (254 m <sup>2</sup> )	2440 sq ft (227 m <sup>2</sup> )

**HIGHER LEVEL (1-3):**  
Adjust the spray upwards for maximum distance.

**LEVEL (0)**  
Adjust the spray in between a dispersed and concentrated watering area.

**LOWER LEVEL (3-1)**  
Adjust the spray downwards to reduce the watering area.

## WARNING:

*Intended for outdoor agricultural or horticultural use only. This is not a toy. Severe electrical shock could result if water is sprayed into outlets or sources of electrical current. Do not use water more than 115°F (46°C). Do not use when the ambient air temperature is less than 40°F (4.5°C). When not in use, drain and store indoors away from freezing temperatures.*

**⚠ WARNING:** This product can expose you to chemicals including styrene, which is known to the State of California to cause cancer. For more information go to [www.P65Warnings.ca.gov](http://www.P65Warnings.ca.gov).

**QUESTIONS? CONCERNS?**

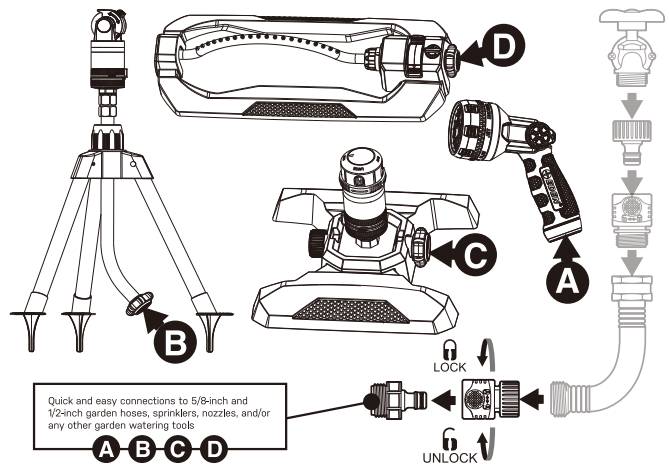
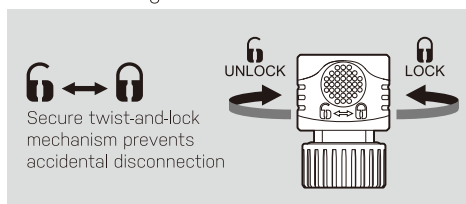
**We're here to help!**

Contact our reliable, US-based Customer Service

[support@edengarden.com](mailto:support@edengarden.com)

1+ 866-521-7718

The Quick Connect Adapter (2 pcs) and Hose Connector with Water Stop (1 pc) simplify your watering experience. Simply attach the connector at the end of your hose. Then, connect the adapters to your watering tools. Interchange various tools in a snap without turning off the water as the adapter will stop the water flow. No more kinking or hose twisting as the adapter allows the hose to swivel 360 degrees.



Quick and easy connections to 5/8-inch and 1/2-inch garden hoses, sprinklers, nozzles, and/or any other garden watering tools.