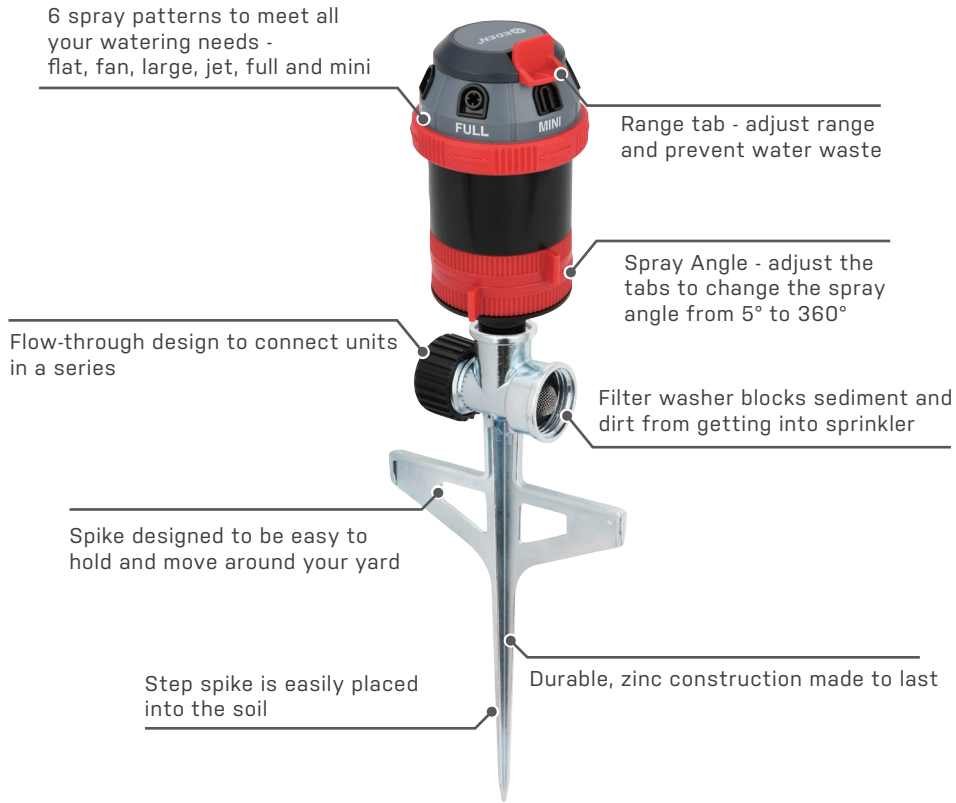


6-PATTERN ROTARY GEAR DRIVE SPRINKLER WITH STEP SPIKE



Assembly

Simply attach the sprinkler head to the top of the spike. Hold the bottom of the sprinkler head and spike to tighten by hand (do not overtighten).



Connect the Hose

Use the Quick Connect System to easily connect and disconnect the sprinkler from the hose. Connect the Product Adapter to the spike. Attach the lockable Quick Connect to the end of the hose, then simply snap in the hose to the sprinkler to begin using.

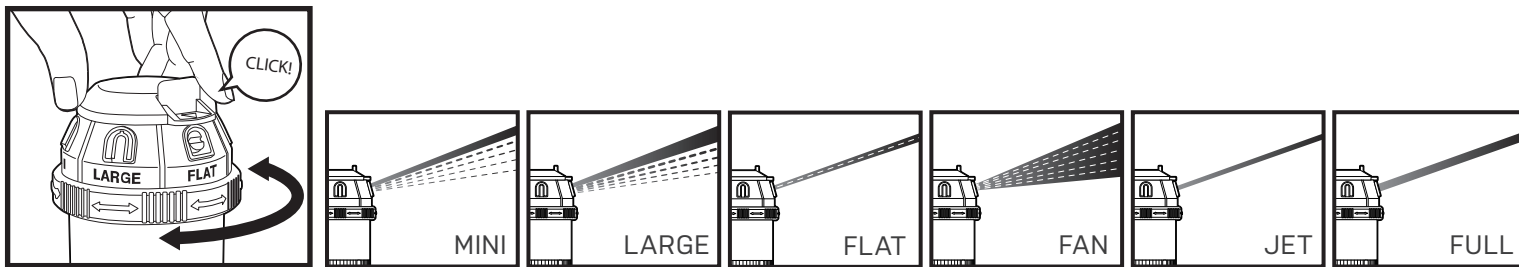
Use the additional included Product Adapter for your nozzles, wands, or other watering tools to switch between tools, even with the water running.

NOTE: If you are not using the Quick Connect System, simply connect the sprinkler directly to the hose.



To extend, simply remove the back end-cap and attach another hose and connect another sprinkler.

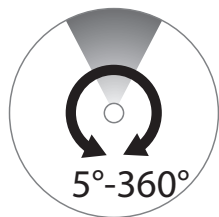
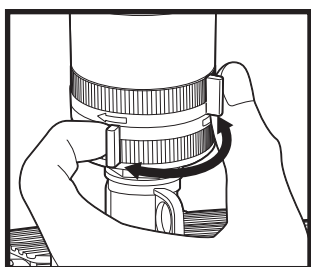




Spray Pattern Adjustments

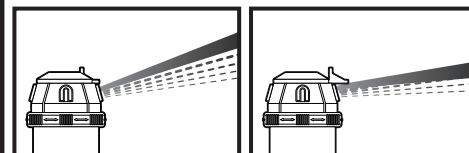
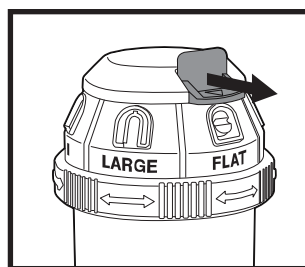
Depending on your watering needs, you can manually select from the various pattern settings :

- Flat - The flat pattern provides a flat wave of water.
- Fan - The fan pattern disperses water in a wide fan shape.
- Large - This provides a larger watering spray area.
- Full - This pattern provides strong distance watering.
- Jet-Concentrated far distance watering.
- Mini-Provides gentle spray for delicate plants.



Spray Angle Adjustment

Adjust the tabs to change the spray angle to fit your needs (from 5° up to 360°).



Range Adjustment

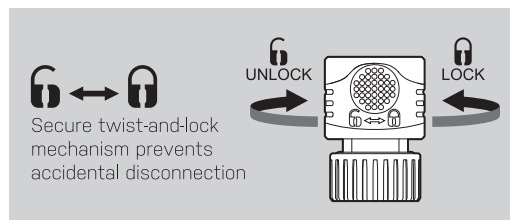
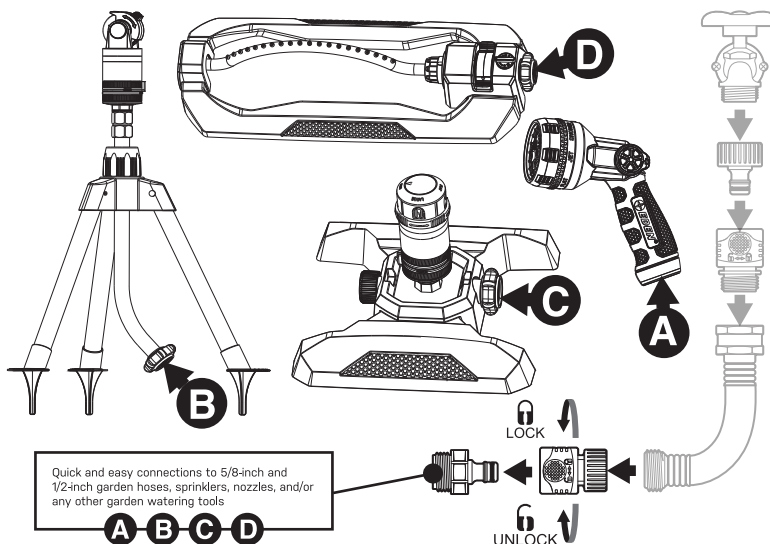
Move the tab in or out to control the spray distance and water where it's needed.

CAUTION

- For outdoor use with cold water only
- Do not spray near electrical connections
- When not in use, rinse the tool with water to remove most of the dirt, dry your tool, and store indoors

WARNING: This product can expose you to chemicals including styrene, which is known to the State of California to cause cancer. For more information go to www.P65Warnings.ca.gov.

The Quick Connect Adapter (2 pcs) and Hose Connector with Water Stop (1 pc) simplify your watering experience. Simply attach the connector at the end of your hose. Then, connect the adapters to your watering tools. Interchange various tools in a snap without turning off the water as the adapter will stop the water flow. No more kinking or hose twisting as the adapter allows the hose to swivel 360 degrees.

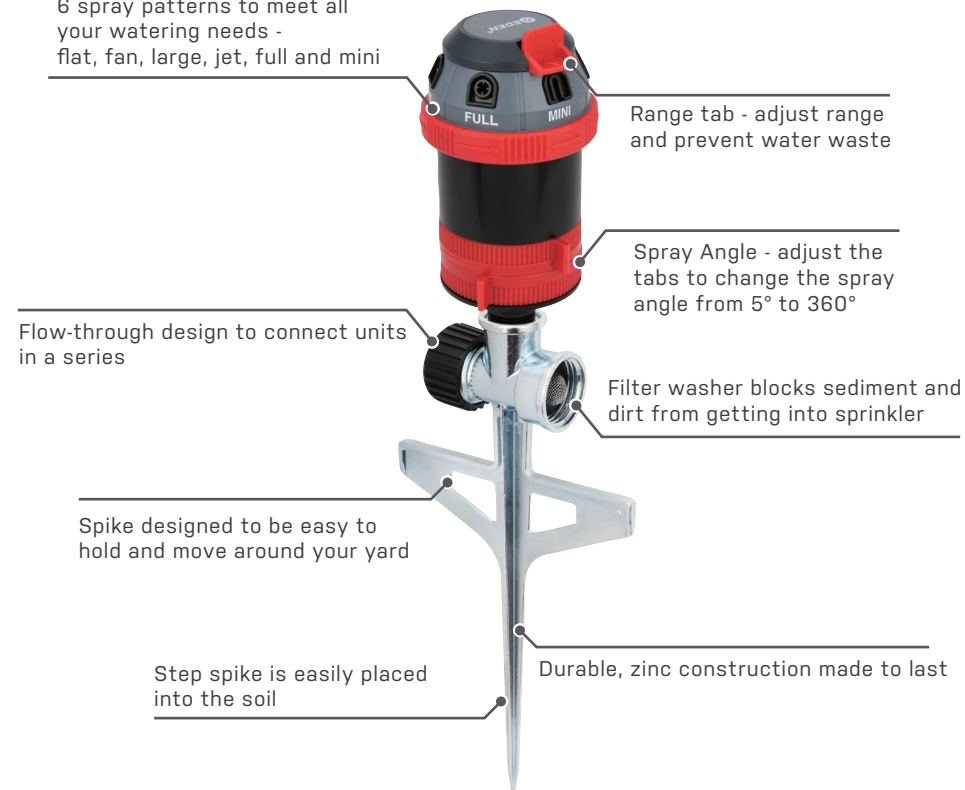




94144EDAMZ

6-PATTERN ROTARY GEAR DRIVE SPRINKLER WITH STEP SPIKE

6 spray patterns to meet all your watering needs - flat, fan, large, jet, full and mini

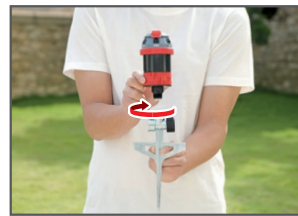


Quick Connect Starter Set fits all standard garden hoses and watering tools



Assembly

Simply attach the sprinkler head to the top of the spike. Hold the bottom of the sprinkler head and spike to tighten by hand (do not overtighten).



Connect the Hose

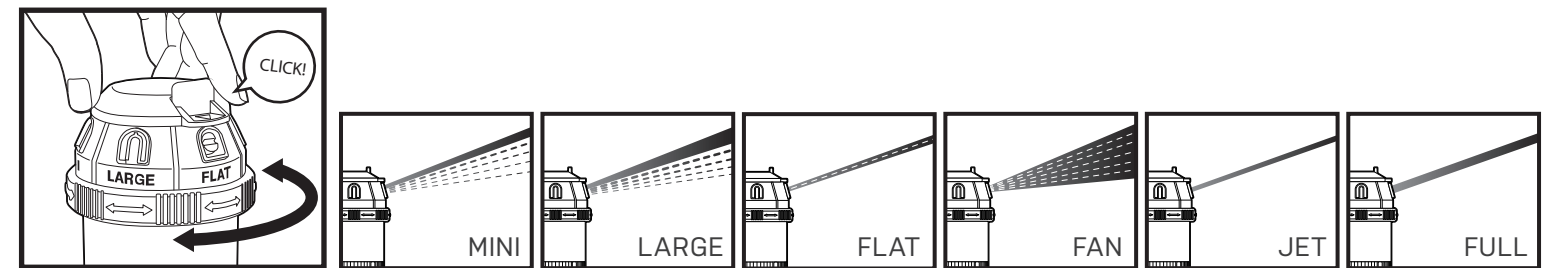
Use the Quick Connect System to easily connect and disconnect the sprinkler from the hose. Connect the Product Adapter to the spike. Attach the lockable Quick Connect to the end of the hose, then simply snap in the hose to the sprinkler to begin using.

Use the additional included Product Adapter for your nozzles, wands, or other watering tools to switch between tools, even with the water running.

NOTE: If you are not using the Quick Connect System, simply connect the sprinkler directly to the hose.



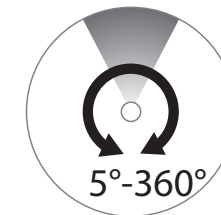
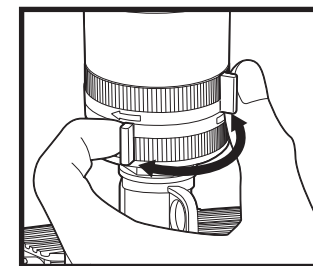
To extend, simply remove the back end-cap and attach another hose and connect another sprinkler.



Spray Pattern Adjustments

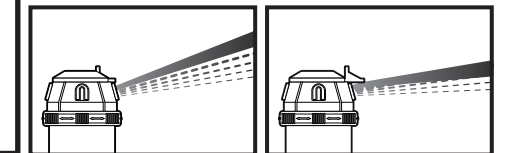
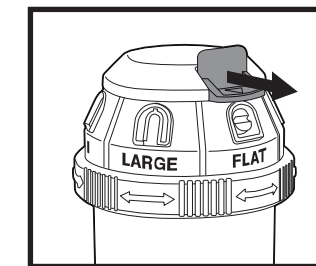
Depending on your watering needs, you can manually select from the various pattern settings :

- Flat - The flat pattern provides a flat wave of water.
- Fan - The fan pattern disperses water in a wide fan shape.
- Large - This provides a larger watering spray area.
- Full - This pattern provides strong distance watering.
- Jet-Concentrated far distance watering.
- Mini-Provides gentle spray for delicate plants.



Spray Angle Adjustment

Adjust the tabs to change the spray angle to fit your needs (from 5° up to 360°).



Range Adjustment

Move the tab in or out to control the spray distance and water where it's needed.

CAUTION

- For outdoor use with cold water only
- Do not spray near electrical connections
- When not in use, rinse the tool with water to remove most of the dirt, dry your tool, and store indoors

WARNING: This product can expose you to chemicals including styrene, which is known to the State of California to cause cancer. For more information go to www.P65Warnings.ca.gov.

The Quick Connect Adapter (2 pcs) and Hose Connector with Water Stop (1 pc) simplify your watering experience. Simply attach the connector at the end of your hose. Then, connect the adapters to your watering tools. Interchange various tools in a snap without turning off the water as the adapter will stop the water flow. No more kinking or hose twisting as the adapter allows the hose to swivel 360 degrees.

