

# 4-PATTERN MOBILE ROTARY GEAR DRIVE SPRINKLER

4 spray patterns to meet all your watering needs - flat, fan, mini and large

Flow through design allows for additional units to be connected in series (Max. suggested sprinklers in tandem: 3)

Spray Angle - adjust the tabs to change the spray angle from 5° to 360°

Hose end connector with added filter to prevent sediment and dirt from reaching sprinkler

Wide "H" shape platform design for more stability

2 extra stainless steel filter washers for a leak-free seal

Quick Connect Starter Set fits all standard garden hoses and watering tools

Perfect for watering lawns and gardens



Agricultural



Horticultural



Vegetables



Fruits



Lawn



Garden

## Assembly

Simply attach the sprinkler head to the top of the base. Hold the bottom of the sprinkler head and base of the sprinkler to tighten by hand (do not overtighten).



## Connect the Hose

Use the Quick Connect System to easily connect and disconnect the sprinkler from the hose. Connect the Product Adapter to the base of the sprinkler. Attach the lockable Quick Connect to the end of the hose, then simply snap in the hose to the sprinkler to begin using.

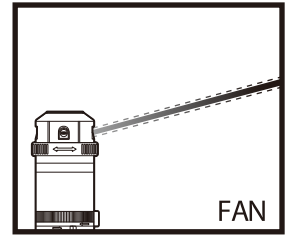
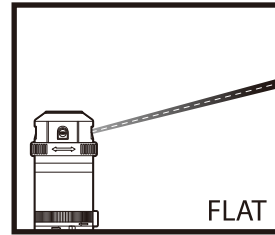
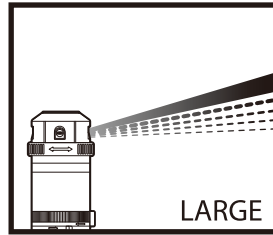
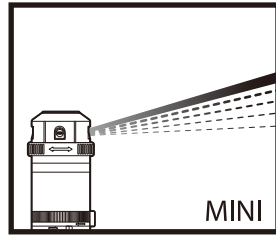
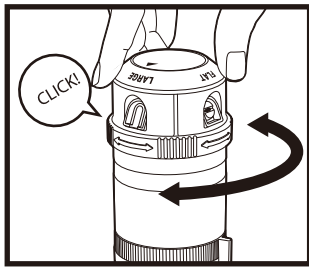
Use the additional included Product Adapter for your nozzles, wands, or other watering tools to switch between tools, even with the water running.

**NOTE:** If you are not using the Quick Connect System, simply connect the sprinkler directly to the hose.



To extend, simply remove the back end-cap and attach another hose and connect another sprinkler.





## Spray Pattern Adjustments

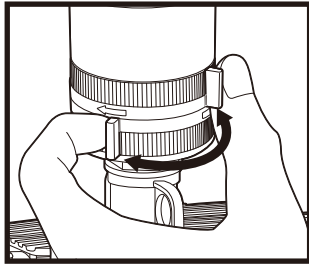
Depending on your watering needs, you can manually select from the various pattern settings :

Mini - Provides delicate plant watering.

Large - Covers the largest possible area.

Flat - The flat pattern will provide a flat wave of water.

Fan - The fan pattern disperses water in a wide fan shape.



## Spray Angle Adjustment

Adjust the tabs to change the spray coverage to fit your needs (from 5° up to 360°)

## WARNING:

*Intended for outdoor agricultural or horticultural use only. This is not a toy. Severe electrical shock could result if water is sprayed into outlets or sources of electrical current. Do not use water more than 115°F (46°C). Do not use when the ambient air temperature is less than 40°F (4.5°C). When not in use, drain and store indoors away from freezing temperatures.*

**WARNING:** This product can expose you to chemicals including styrene, which is known to the State of California to cause cancer. For more information go to [www.P65Warnings.ca.gov](http://www.P65Warnings.ca.gov).

**QUESTIONS? CONCERNS?**

**We're here to help!**

Contact our reliable, US-based Customer Service

[support@edengarden.com](mailto:support@edengarden.com)

1+ 866-521-7718

The Quick Connect Adapter (2 pcs) and Hose Connector with Water Stop (1 pc) simplify your watering experience. Simply attach the connector at the end of your hose. Then, connect the adapters to your watering tools. Interchange various tools in a snap without turning off the water as the adapter will stop the water flow. No more kinking or hose twisting as the adapter allows the hose to swivel 360 degrees.

