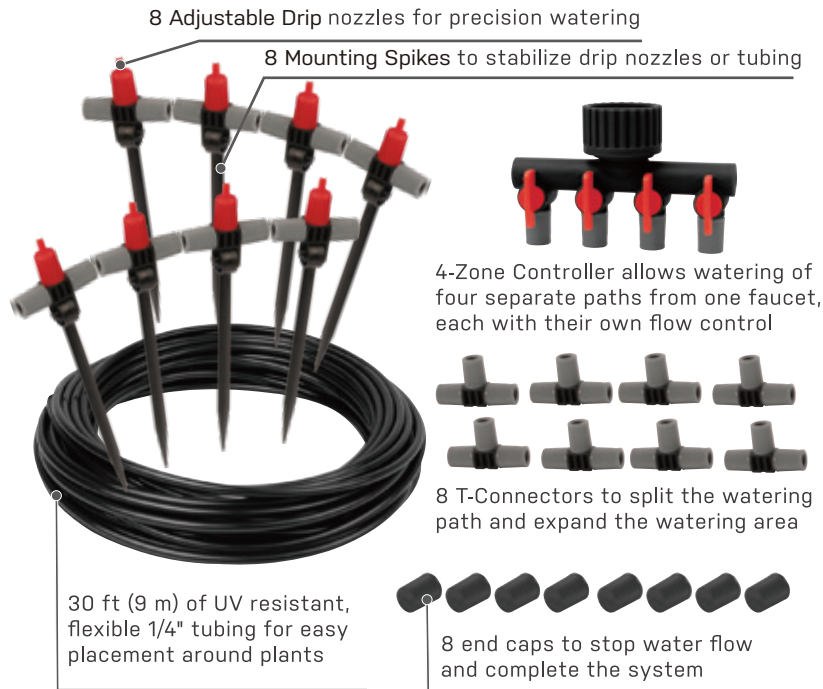


# Eden Micro Drip Irrigation Kit



Using a drip irrigation system keeps roots moist, but not soaked, using less water than other irrigation techniques. Drip irrigation also saves water through reduced evaporation and runoff which can be more efficient than other types of irrigation systems.

Drip irrigation is a slow, low pressure, precise application of water directly to the plant roots. The Micro Drip irrigation

system helps maintain the ideal moisture level, encouraging the formation of deeper roots and abundant foliage.

The Eden Micro Drip Irrigation Kit provides an easy way to water exactly what you need and nothing more. From greenhouses, hanging pots, raised plant beds, or ground level gardens; this kit provides all you need to get started. Hide the tubing under a layer of mulch or soil for a seamless look. Keep the drip nozzles on top of the mulch or soil to prevent clogging.

This system is fully customizable. Add additional drip nozzles or more tubing as your gardens grow or watering needs change.

## Perfect for watering lawns and gardens



Vegetables



Fruits



Lawn



Agricultural



Horticultural



Garden



What's included:

- 1x 30 ft. (9 m) tubing
- 1x 4-Zone Control Valve with Flow Control
- 8x Drip Nozzles (with adjustable head & flow control and Mounting Spikes)
- 8x T-Connectors
- 8x Drip nozzle end caps

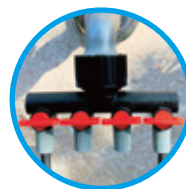
## Features & Benefits

- Provides precise watering with minimal evaporation and over spray to reduce overall water use and cost
- Connects directly to your outdoor faucet or hose end
- Customizable system to fit your raised beds, containers, vegetable rows or shrubs perfectly. Add additional drip nozzles or tubing as your garden grows
- Prevents an overly moist environment that promotes fungal diseases
- Easy to set-up and water plants consistently
- Adaptable to all irrigation needs

## 4 Zone Control Valve with Flow Control

This easy to use control valve connects the Micro Drip Kit to any existing irrigation system. Simply connect the unit to your faucet, water timer, hose, or other water source. Flip the lever on each valve to easily control the watering of four separate areas.

- Each zone has built-in flow control for precise watering
- Constructed with impact-resistant and UV-resistant material
- Hand tighten all connections. No tools required!
- Lightweight but strong in structure
- The flow control valve rotates for easy management of drip speed
- No additional adapter or connector required. The Control Valve can be used with a faucet connection, timer connection, hose connection, etc.



### Inline Drip Nozzle

The Inline Drip Nozzle is designed to produce a very low flow, gentle water drop pattern with an adjustable flow rate. Each nozzle is mounted to a spike for easy placement. Tighten the drip nozzle head to reduce water flow or loosen to increase water flow.

- Adjustable drip nozzle mounted on 4 in. (10.16 cm) spike for easy installation. No tools required
- Drip nozzle can be adjusted horizontally or downwards depending on watering needs
- Recommended operating pressure is 20 to 50 psi
- Rotation of the cap allows adjustment of water flow
- Nozzle heads can be removed for easy cleaning
- High-quality, UV resistant ABS to last season after season
- Trouble-free operation, no moving parts
- Ideal for hanging baskets and greenhouse

Description	Flow Rate (l/ Min ; gpm )	Spray Distance ( m / ft )
Drip Nozzle	0.3 / 0.08	0.015 / 0.049

## T-Connector

The T-Connector allows you to split the path of your system to better fit your watering area. The T-Connector can be used anywhere along the tubing path.

When implementing a Micro Drip System you will need some T-Connectors to connect your various hose lengths. This T-Connector can accommodate virtually any connection situation. Great for managing your current system and expanding your design as your garden grows.

- 3 ports allowing for two output circuits
- Expand your current system by adding more lines
- Sturdy, robust UV protected ABS material to last season after season
- No special tools or glue required



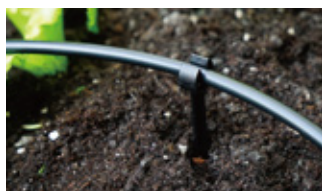
## Micro Drip Pipe Tubing



Use the 1/4 in. 30 ft. (9 m) flexible tubing to run your micro irrigation system from the main connection of the control valve to the drip nozzles placed in your flower pots or gardens. The durable micro tubing is manufactured of high quality, professional grade materials and can be used either above or below ground.

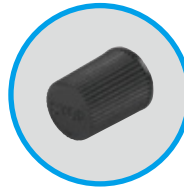
- Maximum recommended operating pressure 50 psi
- Constructed of UV resistant polyethylene material to last season after season
- Flexible to handle and place easily between plants

## Mounting Spike



- Used for drip nozzle mounting or tubing stabilization

## Drip End Cap



- Tube-end completion
- Add to any drip nozzle



## Installation Guide

### Step 1



Connect the 4-Zone Controller to your water source. The Controller easily connects to your outdoor faucet, water timer or hose end.

### Step 2



Place the drip nozzles at their desired location. Then, using scissors, cut the tubing to the correct length to reach the nozzle.



Attach the tubing to the drip nozzles by simply removing the connectors from the nozzle. Slide the connector over the tubing then insert the tubing over the drip nozzle port.

Tighten the connector at the nozzle creating a tight fit.



Repeat for the other end of the drip nozzle. If you are not connecting more tubing, replace the gray connector with an end cap to stop the water flow.



Follow these steps for the remaining drip nozzles.

### Step 3



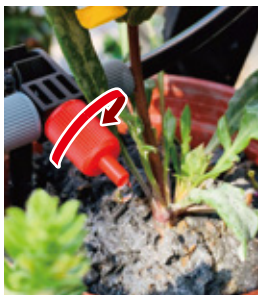
Turn on your outdoor faucet or water source and flip the levers of the 4-Zone Controller to test the water flow.



## Additional Options



Manually adjust each drip nozzle head according to the plant needs.



Tighten the nozzle head to reduce the water flow or loosen to increase the water flow.



Use the T-Connector to split the path of your water flow and reach more areas. Simply connect the tubing to each port of the T-Connector to split the path.



The mounting spikes can be disconnected from the drip nozzles and used to stabilize the tubing on the ground.

### WARNING :

*Intended for outdoor agricultural or horticultural use only. This is not a toy. Severe electrical shock could result if water is sprayed into outlets or sources of electrical current. Do not use water more than 115°F (46°C). Do not use when the ambient air temperature is less than 40°F (4.5°C). When not in use, drain and store indoors away from freezing temperatures.*

**⚠ WARNING:** This product can expose you to chemicals including styrene, which is known to the State of California to cause cancer. For more information go to [www.P65Warning.ca.gov](http://www.P65Warning.ca.gov)



QUESTIONS? CONCERNS?

**We're here to help!**

Contact our  
reliable, US-based  
Customer Service

[support@edengarden.com](mailto:support@edengarden.com)

1+ 866-521-7718